



PACIFIC COAST DESIGN

www.golf-designers.com

CITEE GOLF CLUB BEIJING CHINA

The CiTee Golf Club Beijing is in the final stages of construction, with opening due in early summer 2009. Pacific Coast Design have master planned the whole site including designing what promises to be one of Beijing's most exciting golf courses. Apart from a golf facility of the highest quality attainable the development also features a small area of exclusive villas.

The site is situated only 15 minutes from both the centre of Beijing and the International Airport. The par 72 layout features extensive use of mounding to not only frame each hole but to place the hole in its' own individual setting, enhancing the private space enjoyed by golfers. Strategic bunkering and several carefully located lakes will ensure golf here will be a challenging and thrilling experience.

Another feature of the course will be the quality landscaping used throughout the golf course. Stone retaining walls edge the lakes, ornamental conifers will form the backbone of the internal landscape, while careful planning and construction has seen the established boundary tree planting retained. The course is being grassed with bent grass greens, bluegrass / fescue on the tees, fairways and short roughs and a rye / fescue mix in the long roughs.

The establishment of a high quality golf course so close to Beijing is certain to make the CiTee Golf Club Beijing a very popular destination for Beijing's golfers.



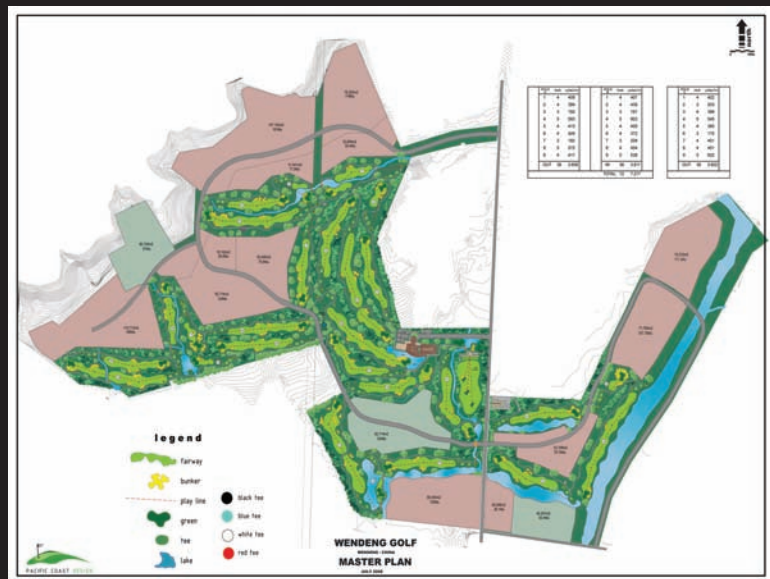
ASIA GOLF AWARDS

PCD designed Black Mountain Golf Course - Hua Hin

Runner up best new Golf Course in Asia - 2007

Best Golf Course in Thailand - 2008

Wendeng Golf - CHINA



Pacific Coast Design have been engaged by the Xin Dong Yang Group for the Site Planning and golf design of the proposed 27 hole golf course at Wendeng, Shandong Province, China.

The site is set under a large forest covered mountain and finishes at the river which runs down the valley.

The golf course is planned as a championship 27 holes:

- Holes 1 to 9 A Course is Par 36 of 3,606 yards
- Holes 10 to 18 B Course is Par 36 of 3,611 yards
- Holes 19 to 27 C Course is Par 36 of 3,602 yards

An exciting combination of landscape, great golf and a beautiful site will see the project gain instant recognition when completed in 2010. The project also has a 200 room hotel, natural hot water spring spa, residential villas, commercial zone, Country Club and Golf Academy.

The Xin Dong Yang Group has already two other very successful golf projects and has proven an excellent judge of golf related development sites.

Sunshine Golf Club - AUSTRALIA

Site Planning and Golf Course Design by Pacific Coast Design, in association with current Australian Open champion Craig Parry, the Sunshine Golf Club – Mt Derrimut is attracting significant attention since opening this year. This exciting project saw the club relocate from a small, flattish site whose viability was under threat due to safety issues with adjoining residential properties, dwindling membership, no sustainable irrigation water supply and the many other issues of a poorly planned course.

The new project was instigated and funded by Australand, one of Australia's leading development companies who are now turning the old site into a prestigious real estate development.



The club now enjoys a new modern facility that features Santa – Ana (hybrid Bermuda grass) tees and fairways, A-4 Bent grass greens and a fully automatic irrigation system with the security of both sewer mining and storm water harvesting to provide sustainable sources of water.

The new course is 6240m long and makes strategic use of the historic stone walls that cross the site. These walls constructed by pioneers and prisoners almost 100 years ago are protected by a heritage listing, and several holes either play across, through or along them. From many of the holes the course features wonderful views over the city of Melbourne and its' western suburbs.

This new development has attracted many new members to the course and as it matures the golf club is certain to develop a reputation as one of Melbourne's finest new golf courses.



Oxford Golf - INDIA



PCD have Master Planned "The Oxford" golf resort as part of the larger Knowledge City project which includes a University and township set among nearly 1,000 acres, laid out along a magnificent valley just beyond the Pune – Mumbai expressway (15 minutes from University Circle and 2.5 hours from the International airport in Mumbai).

When fully completed the resort will include a 150 room hotel, specialist spa, conference facilities, country club, three level golf academy (under lights) and an 18 hole golf course layout of Par 72, 7020 yards. As part of the resort zone will be 300 unique villas in a range of cluster designs set into the hills overlooking the golf and four apartment towers.

Set in such an exciting location with dramatic rises across the golf course, The Oxford is destined to be the number one golf course in India in 2009 and will rival any such facility across Asia within a few short years.



Nine holes have been opened with the following nine to be ready early in 2009. The exciting range of villas is being keenly sought by astute purchasers from across India who instantly see the magic such a site generates.

To compliment The Oxford Group's strategy of business, lifestyle and tourism they have also recently opened the "O Hotel" in Pune which has set new benchmarks for hospitality and spectacular décor. PCD is currently Masterplanning a second site for the group which will encompass a nine hole golf course, residential club and high end apartment living.

Clover Greens - INDIA



Clover Greens, a new residential style 18 hole golf course development located only 40 minutes from central Bangalore is set to fully open soon following the "soft opening" held in November 2008. PCD were engaged to undertake the Site Master Plan inclusive of both the residential layout and detail design of the golf course.

This is a tight, challenging layout but has been specifically designed to provide a strategic challenge for good golfers while still being able to be played by social golfers through multi tee systems, wider fairways in high handicap zones and subtle mounding. The Course is played through a landscape designed to provide a year round presentation as a tree lined golf course highlighted with colour.

The site has a unique character of a central ridge line of protruding rock where golf features have been positioned within and around the large rock outcrop resulting in a stunning backdrop to greens and elevated platforms for tees.

The golf course is positioned centrally within the compact site and is a Par 70, 5923 yards, designed and built to international standards. The residential areas are placed around the perimeter of the golf to maximise the potential of golf views and the natural landscape experience associated with the golf course. Given a few years for landscape to mature Clover will make a strong impact and welcome addition to the range of golf courses around Bangalore.

PCD - Meeting the water challenge

The issue of finding a sustainable water source is a problem facing many golf courses throughout the world. PCD tackles this matter on several fronts;

STORM WATER HARVESTING

Collecting water from local underground storm water drains and transferring it to storage lakes, also diversion of excess creek water into storage lakes.

SEWER MINING

Sewer Mining is the collection of untreated effluent water from Authority pipe systems and locally treating this water so that about 85% of the treated water is retained for use by golf and 15% is returned to the system.

DESALINATION

Desalination is the local treatment of salty or salt water to remove the salts and have a water source suitable for use by both golf or facilities. Using reverse osmosis technology plants of all sizes and output potential are available.

TREATED EFFLUENT

Mostly produced by government authorities this resource has been readily available in many parts of the world for years and is used extensively on golf courses.

GOLF COURSE DESIGN

The smart use of grass species, design contouring and water harvesting maximize the best use of the prevalent water quality. Actively growing golf courses can reduce our carbon footprint by approximately 1 tonne per hectare per year, as well as the associated benefits of wildlife habitat, specie preservation and the provision of oxygen for 120,000 persons per day per 18 holes.



Example: Storm water harvesting



Example: Sewer mining

PCD PROFILE - 2008



PCD Director
Phil Ryan



PCD Director
George Diakogeorgiou



PCD Director
Paul Reeves



**PCD Asian Regional
Manager**
Robert Cairns



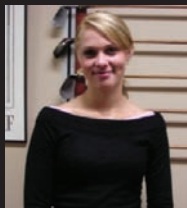
PCD India
Prakash Alvares



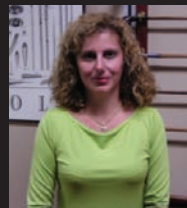
PCD China
Tony Liu



PCD Shaper
Prapan Paison



PCD Landscape
Brooke Templeton



PCD Admin
Silvana Michelin



PCD Irrigation
David Hanby



PCD Consultant
John Neylan



PCD Engineering
Alex Rodwell